

# PUBLIC ROOMS

## To Book a Public Room:

Online booking system (preferred): <http://www.joh.cam.ac.uk/online-room-booking-system>

Email: [PublicRooms@joh.cam.ac.uk](mailto:PublicRooms@joh.cam.ac.uk)

Telephone: 01223 338735



All bookings for public rooms, including the Fisher Building and Divinity School should be made through the Accommodation and Bookings Office.

## Opening and Closing Times:

### **Fisher Building**

Open daily between 08:00 - 23:59

### **Divinity School**

Open daily between 08:00 - 17:00

Entry after 17.00 via the door on 1 All Saints Passage using your College Access Card.

### **1 All Saints Passage (Supervision Rooms)**

Open daily between 08:00 - 23:00

Entry via Corfield Court using your College card.

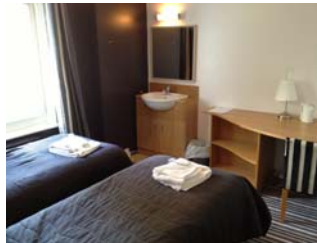
# GUEST ROOMS

## To Book a Junior Guest Room (JGR):

Webform (preferred): <https://www.joh.cam.ac.uk/guest-room-booking-form>

Email: [GuestRooms@joh.cam.ac.uk](mailto:GuestRooms@joh.cam.ac.uk)

Telephone: 01223 338691



## Junior Guest Room Information:

8 single rooms (£42 per room per night)\*

4 twin rooms (£58 per room per night)\*

Breakfast included in the BDR except on Sundays

Maximum stay of 3 consecutive nights

No children under the age of 16 can stay in JGRs



\*01 October 2017- 30 September 2018 prices



# Accommodation and Bookings Information



## Accommodation and Bookings Office

Housekeeping/Accommodation & Bookings Office, Forecourt: open Mon-Fri 0800-1600

# Divinity School

# Fisher Building

# Supervision Rooms

## Main Lecture Theatre

Used for: lectures, concerts, plays  
Capacity: 150 (plus 2 wheelchair spaces)  
Facilities: data projector and screen, lectern, PA system (microphone), DVD and Blu-Ray player

## Central Hall

Used for: refreshments, exhibitions, receptions  
Capacity: 150  
Facilities: LCD screen

## Lightfoot Room

Used for: lectures, refreshments, multi-purpose  
Capacity: 50  
Facilities: data projector and screen, lectern, PA system (microphone)

## Sir Arthur Quiller Couch Room

Used for: boardroom style meetings  
Capacity: 18  
Facilities: LCD screen

## Teaching Room 1

Used for: classroom style, teaching and seminars  
Capacity: 24  
Facilities: data projector and screen, blackboards

## Teaching Room 2

Used for: lecture style, teaching and seminars  
Capacity: 24  
Facilities: LCD screen, whiteboards



## Palmerston Room

Used for: lectures, play rehearsals, badminton  
Capacity: 250 (plus 10 wheelchair spaces)  
Facilities: data projector and large screen, lectern and PA system (microphone)

## Boys Smith Room

Used for: lecture style, teaching and seminars  
Capacity: 50  
Facilities: data projector and screen, DVD player and whiteboards

## Castlereagh Room

Used for: lecture style, teaching and seminars  
Capacity: 50  
Facilities: data projector and screen, DVD player and blackboards

## Dirac Room

Used for: boardroom style meetings and teaching  
Capacity: 25  
Facilities: data projector and screen, DVD player and whiteboards

## Fisher Foyer

Used for: refreshments, exhibitions, receptions  
Capacity: 100



## FISHER BUILDING SUPERVISION ROOMS

### Boys Smith Room Annexe

Setup: 6 chairs around a table  
Facilities: data projector and screen, whiteboard

### Committee Room

Setup: 6 chairs around a table  
Facilities: data projector and screen, whiteboard

### Castlereagh Annexe

Setup: 6 chairs around a table  
Facilities: whiteboard

### Drawing Room

Setup: 10 chairs around a table  
Facilities: whiteboard

## 1 ALL SAINTS PASSAGE (CORFIELD COURT)

### Supervision Room One

Setup: 11 chairs around a table  
Facilities: data projector and screen, whiteboard

### Supervision Room Two

Setup: 11 chairs around a table  
Facilities: data projector and screen, whiteboard

### Supervision Room Three

Setup: 14 chairs around a table  
Facilities: data projector and screen, whiteboard

### Supervision Room Five

Setup: 6 chairs around a table  
Facilities: whiteboard

